



**M**ANIPUR  
**I**NTERNATIONAL  
**U**NIVERSITY

## Shaping The Leaders of Tomorrow.

An institution committed to intellectual rigor, industry integration, and transformative learning experiences that shape global professionals.



ज्ञान-विज्ञान विमुक्तये

Manipur International University (MIU) is a leading state private university located in Imphal, Manipur, dedicated to delivering quality higher education through academic excellence and industry-focused learning. Established under the Manipur International University Act, 2019, the university aims to create future-ready professionals equipped with the knowledge, skills, and global perspectives required in today's competitive world.

Manipur International University offers a wide range of academic programs at undergraduate, postgraduate, diploma, and doctoral levels. The university provides education in disciplines such as Engineering, Information Technology, Management, Commerce, Science, Humanities, Journalism, Library Science, Vocational Studies, Fire & Safety, and Paramedical Sciences.

# SCHOOL OF SCIENCE

## ABOUT THE SCHOOL

The School of Science at Manipur International University provides students with a strong foundation in scientific knowledge, analytical thinking, research skills, and practical learning. The school is committed to nurturing curiosity, innovation, and scientific excellence through a multidisciplinary approach to education. Through laboratory experiments, field studies, research projects, and industry exposure, students gain hands-on experience and develop critical problem-solving abilities. The school prepares learners for careers in research, education, healthcare, environmental management, technology, and various scientific industries.



**Empowering scientific minds through discovery, innovation, and excellence.**



## KEY HIGHLIGHTS

### RESEARCH-ORIENTED LEARNING

Students engage in scientific inquiry, laboratory experiments, field studies, and research projects that develop analytical and problem-solving skills.

### EXPERIENCED FACULTY

Learn from a team of highly qualified professors, researchers, and industry practitioners dedicated to delivering quality education and mentorship.

### MODERN LABORATORIES

Well-equipped laboratories provide hands-on training, practical exposure, and opportunities for scientific exploration and innovation.

## WHY CHOOSE MIU SCIENCE

Manipur International University's School of Science is built on a strong foundation of academic excellence, scientific research, and practical learning.

Our programs are designed to develop analytical thinking, scientific reasoning, research capability, and professional competence required for success in today's rapidly evolving world.

MIU stands as a trusted institution committed to nurturing future scientists, researchers, educators, and industry professionals.

*MIU Science sets the benchmark for excellence in scientific education.*



## KEY ADVANTAGES

### INDUSTRY-RELEVANT CURRICULUM & MODERN INFRASTRUCTURE

Our curriculum combines theoretical concepts with practical applications, ensuring students develop both academic knowledge and professional skills. Modern laboratories, smart classrooms, research facilities, and innovation centers create a dynamic learning environment.

### RESEARCH OPPORTUNITIES & CAREER DEVELOPMENT

Students participate in research projects, scientific workshops, laboratory training, field studies, and academic seminars. Dedicated career guidance, internship support, and industry interactions help students build successful professional careers.





## UNDERGRADUATE SCIENCE PROGRAMS

The School of Science at MIU offers comprehensive undergraduate programs designed to build strong scientific foundations and practical expertise. These programs prepare students for careers in research, industry, education, healthcare, environmental sciences, and higher studies.

Students benefit from modern laboratories, experienced faculty, and research-driven learning experiences.

*Building scientific knowledge, analytical thinking, and innovation for a better future.*

## PROGRAMS OFFERED

### **B.SC. (PCM/PCB/ ZBC)**

Duration: 3 Years | Eligibility: 10+2 (Science Stream)  
Provides a broad foundation in scientific disciplines including Physics, Chemistry, Mathematics, Biology, Zoology, Botany and related subjects while developing analytical and practical skills.

### **B.SC. IN HEALTH & SAFETY**

Duration: 3 Years | Eligibility: 10+2 (Science Stream)  
Focuses on occupational health, workplace safety rules, risk assessment, fire safety, industrial hygiene, and accident prevention.

### **B.SC. CHEMISTRY**

Duration: 3 Years | Eligibility: 10+2 (Science Stream)  
Develop expertise in organic, inorganic, physical, and analytical chemistry through laboratory-based learning.

### **B.SC. ENVIRONMENTAL SCIENCE**

Duration: 3 Years | Eligibility: 10+2 (Science Stream)  
Understand environmental systems, sustainability, conservation, pollution management, and climate-related challenges.

### **B.SC. MATHEMATICS**

Duration: 3 Years | Eligibility: 10+2 (Science Stream)  
Focus on mathematical theories, statistics, algebra, calculus, differential equations, and computational methods.

### **B.SC. PHYSICS**

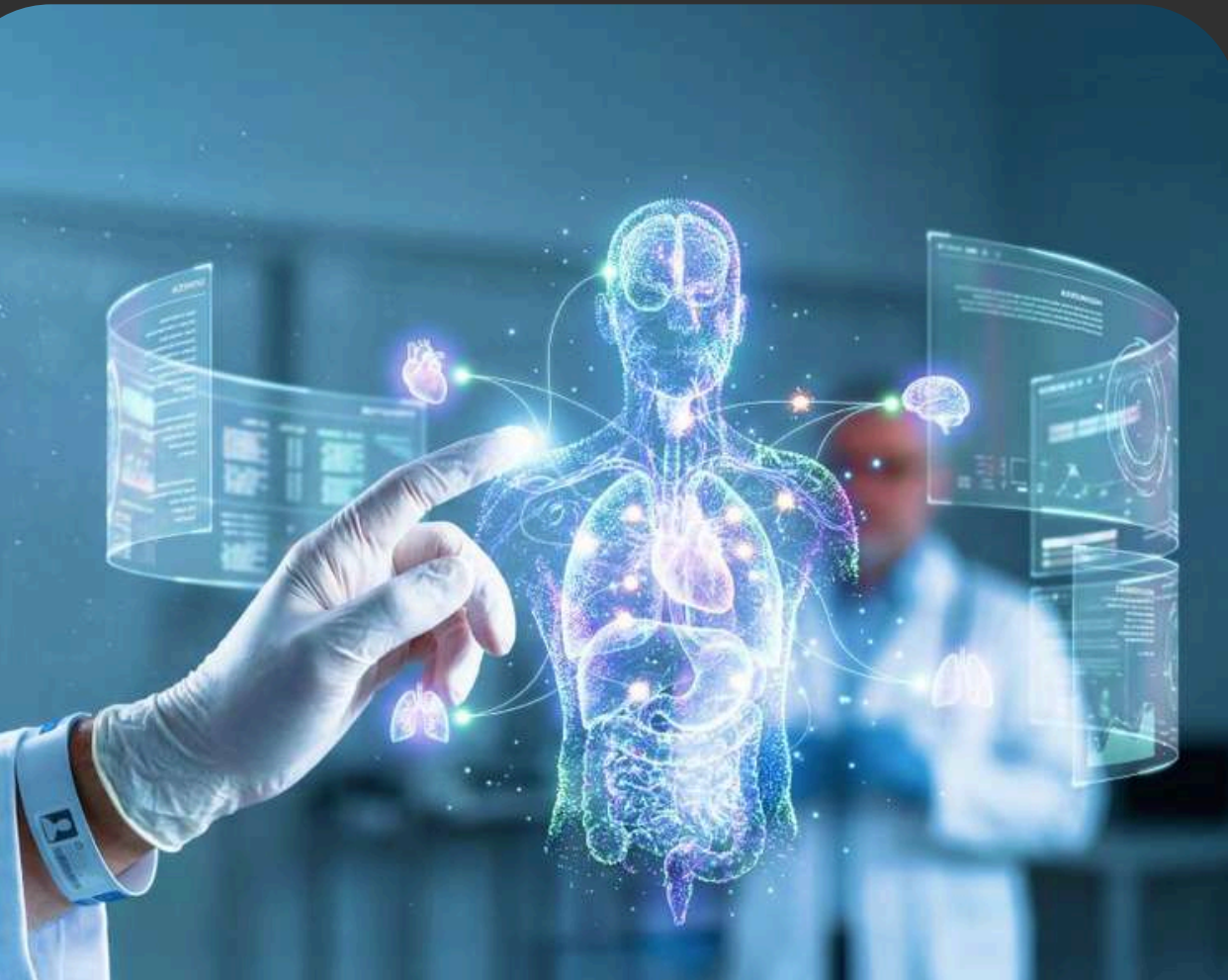
Duration: 3 Years | Eligibility: 10+2 (Science Stream)  
Study mechanics, electronics, optics, thermodynamics, quantum physics, and modern scientific applications.

## POSTGRADUATE SCIENCE PROGRAMS

Our postgraduate programs are designed to deepen scientific expertise and prepare students for advanced careers in research, academia, and industry.

With a strong emphasis on innovation, laboratory research, and scientific advancement, MIU's postgraduate programs equip students with specialized knowledge and professional competencies.

*Advancing knowledge, deepening expertise, and creating future business leaders.*



## PROGRAMS OFFERED

### **M.SC. IN ENVIRONMENTAL SCIENCE**

Duration: 2 Years | Eligibility: Graduation  
Focus on environmental sustainability, ecological management, conservation science, and environmental research.

### **M.SC. IN ENVIRONMENTAL SCIENCE**

Duration: 2 Years | Eligibility: Graduation  
Focuses on risk management, occupational health, safety system audits, environmental safety, industrial hygiene and safety law compliance.

### **M.SC. MATHEMATICS**

Duration: 2 Years | Eligibility: B.Sc. Mathematics  
Develop advanced expertise in pure and applied mathematics, statistics, computational techniques, and research methodologies.

### **M.SC. CHEMISTRY**

Duration: 2 Years | Eligibility: B.Sc. Chemistry  
Gain specialized knowledge in analytical, organic, inorganic, and industrial chemistry with research applications.

### **M.SC. PHYSICS**

Duration: 2 Years | Eligibility: B.Sc. Physics  
Explore advanced concepts in theoretical and experimental physics, modern technologies, and scientific research.

Admission Open

2026-27



# Begin Your Journey at Manipur International University

**CONTACT US**

Phone: +917319727766  
admissions@miu.edu.in  
www.miu.edu.in